



**16HP Stockman
1993 – 1994
23K94, 23H3, 23E94**

**1995-1996
23C95**

**18HP Stockman
1996 – 1998
23K96**

FOREWORD

To ensure continued efficiency of your Cox Ride-on Mower, regular maintenance at periodic intervals is essential. For your guidance this booklet contains schedules applicable to the maintenance required at the appropriate times, and a service record.

TRANSPORTING

If your machine is transported regularly from site to site, especially by trailer, it is recommended to either adjust clutch plates wide apart (retighten bolts) or place cardboard between clutch cone and clutch plates to avoid damaging clutch cone.

IMPORTANT

If operating in conditions such as those mentioned below, engine oil, air filtering, chassis lubrication, greasing and adjustments should be serviced at more frequent intervals than specified in this booklet.

- a) Mowing in damp or wet conditions.
- b) Mowing in rough or dusty conditions.
- c) Mowing in hilly areas under heavy load.

DIFFERENTIAL (Optional)

For models fitted with a differential it is essential that the maintenance schedule supplied on page five (5) be performed by your COX-RPM Dealer. This will ensure the differential has trouble free operation and long durability.

WARRANTY SERVICE PROBLEM:

Purchase Date of machine must be given before warranty will be accepted for processing. In the event of a need for warranty service contact your local Authorised COX-RPM Dealer.

WARRANTY REGISTRATION:

The warranty registration card must be completed by the dealer with the customer at the time of purchase and returned to COX-RPM or an authorised Dealer within 14 days.

COX MAINTENANCE SCHEDULE

<p>1) Check all pivot point areas for paint wear. (Tighten where necessary).</p> <p>2) Check all bearing grub screws and lock collars (Tighten grub screws using loctite)</p> <p>3) Check clutch arm pivot bolt for tightness ensuring clutch arm does not rock, vertically on its pivot bolt.</p> <p>4) Check tyre pressure 140 kpa (20 P.S.I). (MAX)</p> <p>5) Check and adjust blade level as required (Blade tip 5mm up from bottom edge of cutter skirt).</p> <p>6) Check or replace blades if necessary (replace if flute worn). Check blade nuts for tightness (36-40Nm) Do not overtighten.</p> <p>7) Check and adjust engine belt as required.</p> <p>8) Check battery acid level and charge. (Also terminals for corrosion). Ensure battery leads are clear of steering universal</p> <p>9) Grease stub axles</p> <p>10) Lubricate steering and drive chains (Pressure spray lubricant preferred).</p> <p>11) Lubricate steering tie rod ends & all pivot areas. (Engine oil is acceptable)</p> <p>12) Lubricate throttle and choke controls and cables (WD40 is acceptable)</p>	<p>PRE-DEL & INITIAL 5 HOURS OF USE A</p>
<p>13) Check intershaft sprocket teeth for wear. (Replace once teeth are worn as required).</p> <p>14) Check cutter and clutch pulleys (Replace pulleys if excessive wear has occurred in vee as required).</p> <p>15) Check cutter disc for damage and blade tightness (36-40Nm) Do not overtighten.</p> <p>16) Check and adjust engine belt & cutter belt As required. (Replace belt if perished or badly stretched as required).</p> <p>17) Check and adjust cutter level (both front to rear & side to side as required).</p> <p>18) Check and adjust cutter electric clutch brake air gap</p> <p>19) Check and adjust foot (EMERGENCY) brake assemblies. (Replace linings if worn down to pop rivets as required).</p> <p>20) Check and lubricate steering and drive chain. Lubricate drive chain more often if chain is running dry. (Replace if worn or damaged as required).</p> <p>21) Check and adjust clutch plates as required.</p>	<p>IF MACHINE IS USED IN VERY DUSTY OR WET CONDITIONS, SERVICE EVERY 12 HOURS</p> <p>EVERY 25 HOURS OF USE B</p>
<p>22) Dismantle, check & re-pack differential. (Use lithium based grease).</p>	<p>INITIAL 50 HOURS & EVERY 250 HOURS C</p>
<p>23) Re-torque differential retaining bolts (Using 6mm allen key to 30Nm)</p> <p>24) Re-torque cutter shaft nut 120Nm. (32" cut)</p> <p>25) Re-torque rear axle nuts (except diff side) 100Nm.</p> <p>26) Check and adjust clutch arm pivot bolt (no rocking vertically).</p>	<p>EVERY 100 HOURS D</p>

N.B. For engine oil/filter, air filter and fuel filter maintenance refer to the engine owners manual for instructions.

PRE-DELIVERY

1. INTRODUCTION:

The purpose of this procedure is to ensure the dealer/distributor has made the necessary installations, adjustments and checks, before the machine is operational. This procedure begins upon receiving the crated mower and is finalised once the mower has been either sold or leaves the dealer/distributors premises. This is the minimum amount of work required, however it should not be limited to only the areas detailed in this procedure.

2. RESPONSIBILITY:

It is the responsibility of the dealer/distributor to ensure that before a machine is delivered to a customer, it is in perfect operational condition.

3. PROCEDURE:

3.1 REMOVE MACHINE FROM CRATE

Cut the four metal straps retaining the machine to the inside of the crate. Remove the front door of the crate (facing front of machine) and make sure the handbrake is disengaged, roll the machine out.

3.2 CHECK ACCESSORIES SUPPLIED IN SEAT PROTECTION BAG

- 3.2.1
 - Engine owners manual
 - Cox warranty & service book
 - Tube spanner (AM006C1)
 - Tommy bar (AM296) 18HP
 - Wiring diagram (Briggs & Stratton engines only)
 - Briggs & Stratton dealer directory (Briggs & Stratton engines only)
 - Ignition keys (AM015)
 - Spark plug spanner (AM295) 18HP
 - Steering wheel (AM167M8)
 - Steering wheel emblem (AM225)
 - Seat springs and retaining bolts and nuts
 - Cox Cap (AM162) & cap attachment (AM162-C)

3.2.2 Remove the four seat bolts to remove the plastic bag protection from around seat.

3.2.3 Re-tighten the four seat bolts making sure that the seat is adjusted into the desired position by using the seat transmission slots.

3.3 CHARGING THE BATTERY

3.3.1 Using a screw driver and 7/16 AF Spanner undo the battery clamp screw and nut and remove both clamps, lift battery cover from battery.

3.3.2 Remove the fastener holding the black earth wire to the negative terminal of the battery.

3.3.3 Remove the six plastic filler caps from the battery and any tape covering the vent holes on the battery filler caps.

3.3.4 Fill each cell of the battery until the acid levels are in between the upper and lower levels marked on the battery. (use 1.240-1.260 specific gravity)

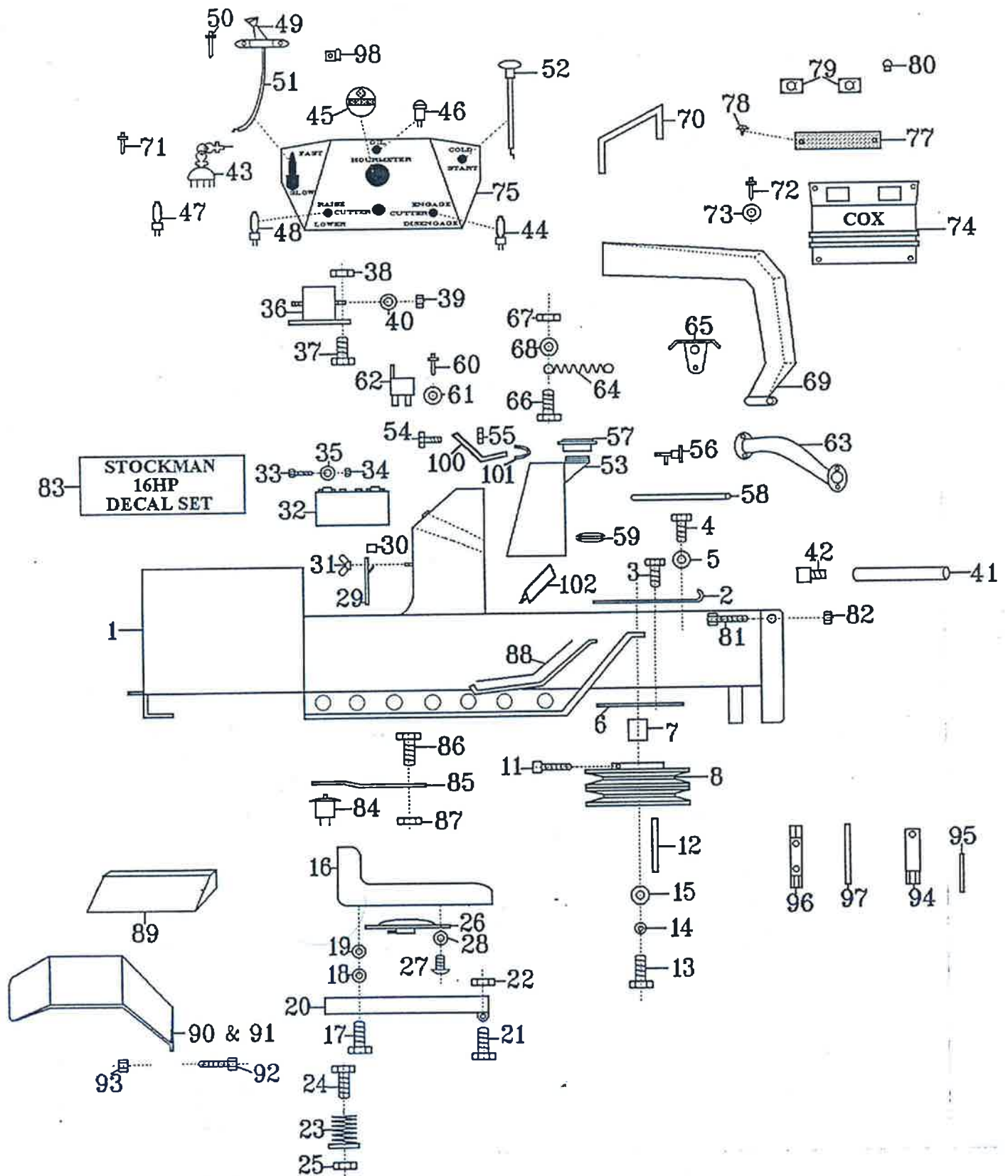
3.3.5 Using a 12V, 4 or 8amp battery charger, charge the battery for a period of 30 minutes. After the charge proceed to do the following:

- Allow battery to stand for 30 minutes before usage.
- Check acid levels in all battery cells (top up if necessary).

3.3.6 Firstly, install the red battery lead on to the positive terminal and then the black battery lead on to the negative terminal.

- 3.3.7 Place battery in position and fit battery cover. Place both battery clamps over battery and using a screw driver and 7/16 AF spanner, firmly tighten the battery clamp screw and nut. (Make sure battery leads are well clear of steering universal).
- 3.4 HOURMETER OPERATIONAL (IF APPLICABLE)
Ensure the red positive wire is connected to the outlet supplied at the back of the hourmeter. (If the ignition is left on the hourmeter will continue to operate).
- 3.5 TYRE PRESSURE
Before operation ensure that all tyre pressures are equal. The maximum pressure allowed is 140 kpa (20 P.S.I.).
- 3.6 ENGINE OIL
Before operation ensure that engine oil level is to the full mark on the dipstick (SAE 30 oil only).
- 3.7 FUEL TAP
Ensure the in line fuel tap (under fuel tank) is turned to the on position before attempting to start engine. (Use unleaded fuel only).
- 3.8 STEERING WHEEL
- 3.8.1 Using the tommy bar (AM007) and tube spanner (AM006C1) supplied, tighten the steering wheel using the nut and washer attached to the steering shaft.
- 3.8.2 Align the three locating pins in the steering emblem with the holes supplied in the steering wheel, press the steering emblem in using hand pressure only.
- 3.9 SEAT SPRINGS
- 3.9.1 Using a 9/16 spanner, 9/16 socket, extension and ratchet wrench, tighten the two seat springs, bolts and nuts to the triangular brackets welded to the chassis, which are situated under the seat transmission.
- 3.10 CLUTCH PLATE ADJUSTMENT
- 3.10.1 Align the clutch arm assembly to run parallel with the side of the transmission housing.
- 3.10.2 Engage and disengage the cutter lever a few times and leave in the **engaged** position, this will centre the clutch arm assembly into the neutral position.
- 3.10.3 Slide the reverse clutch plate (left hand side) to just touch the clutch cone and using the tommy bar (AM007) and tube spanner (AM006C1), tighten the two reverse clutch plate set screws, then lock nuts. Do not overtighten lock nuts.
- 3.10.4 Slide the forward clutch plate across until there is a 1-1.5mm clearance between the clutch cone and the forward clutch plate, again using the tommy bar (AM007) and tube spanner (AM006C1), tighten the two forward clutch plate set screws, then lock nuts. Do not overtighten lock nuts, **disengage** cutter.
- 3.11 MICRO (SAFETY) SWITCHES
- 3.11.1 Foot micro - With cutter lever disengaged, attempt to start the engine without using the foot micro switch. Engine should not start.
- 3.11.2 Disengagement micro - While sitting on machine with foot on micro switch and cutter engaged, attempt to start machine. Engine should not start.
- 3.11.3 Seat micro - While sitting on machine start engine, engage cutter and lift weight from seat. Engine should cut out.

**STOCKMAN 23H3-23E94-23K94-23C95-23K96
GROUP 11: MAIN CHASSIS & COMPONENTS**

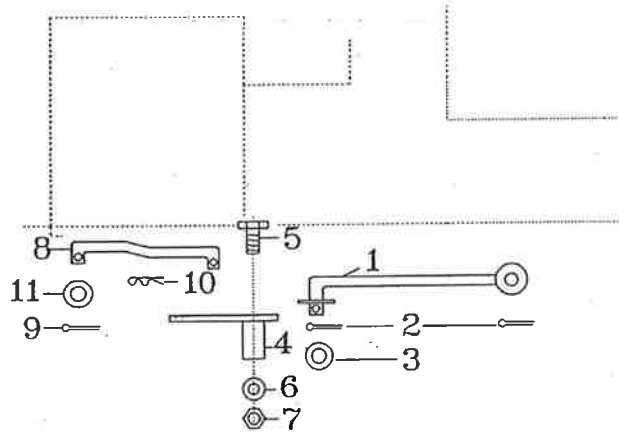


**STOCKMAN 23H3-23E94-23K94-23C95-23K96
GROUP 11: MAIN CHASSIS & COMPONENTS**

Ref No.	Part No.	Description	Ref No.	Part No.	Description
1	231101B96	Chassis NLA	65	AM181	Bonnet Strap (2)
2	S231116	Engine Mounting Plate	66	SH0412C	Bonnet Spring Bolt (2)
3	B0620C	Engine Mounting Bolt (4)	67	N04CN	Bonnet Spring Nut (2)
4	SH0516C	Eng. Mtg. Belt Ten. Bolt (4)	68	W040816	Bonnet Spring Washer (2)
5	WS050216	Belt Ten. Spring Washer (4)	69	S231103G3B	Bonnet NLA
6	AM078B0	Engine Mntg Bolt Plate (2)	70	S231133	Bonnet Trim
7	S231119	Engine Pulley Spacer	71	PR0205	Dash Panel Rivet (4)
8	S231137E3	Double Engine Pulley	72	PR0207	Bonnet Grill Rivet (4)
11	GS0505C	Drive Pulley Grub Screw	73	W020516	Bonnet Grill Rivet Washer (4)
12	S231125	Engine Key	74	AM224F3	Bonnet Grill NLA
13	SH0720F	Pulley Retaining Bolt	75	SKIT6316	Dash
14	W07S	Pulley Ret. Bolt S/P Washer	77	AM222	Head Light Lens
15	W072004	Pulley Ret. Bolt Washer	78	ST0610	Lens Screw (2)
16	AM164	Seat NLA	79	AM221	Head Light Reflector (2) NLA
17	SH0512C	Seat Retaining Bolt (4)	80	AM228	Lamp (2)
18	W05S	Seat Ret. S/P Washer (4)	81	SH0412C	Bonnet Hinge Bolt (2)
19	W052003	Seat Ret. Bolt Washer (4)	82	N04CN	Bonnet Hinge Bolt Nut (2)
20	AM226B99F	Seat Mount	83	SDEC23H316.0	Stockman 16 HP Decal Set NLA
21	SH0516C	Seat Mount Hinge Bolt (2)		SDEC23K9618.0	Stockman 18 HP Decal Set NLA
22	N05CN	Hinge Bolt Nut (2)	84	AM092	Micro Switch NLA
23	AM177	Seat Spring (2)	85	AM100R2	Foot Micro Spring Plate NLA
24	SH0612C	Seat Spring Ret. Bolt (2)	86	SH0408C	Spring Plate Bolt
25	N06CN	Seat Spring Ret. Bolt Nut (2)	87	N04CN	Spring Plate Bolt Nut
26	AM165	Seat Micro Switch NLA	88	NSM01	Non Skid Mat -Clutch Pedal
27	SR0408W	Seat Micro Attach Bolt (2)	89	S231104	Centre Guard
28	W04S	Seat Micro Attach Washer (2)	90	231105B	RH Mudguard NLA
29	S231117	Battery Cover NLA	91	S231106G3B	LH Mudguard NLA
30	S231132	Battery Cover Pad NLA	92	SH0408C	Mudguard Bolt (12)
31	NW04	Wing Nut	93	N04CN	Mudguard Bolt Nut (12)
32		Battery purchase locally	94	AM295	Spark Plug Spanner
33	SH0412C	Battery Terminal Bolt (2)	95	AM296	Plug Spanner Tommy Bar
34	N04C	Battery Terminal Bolt Nut (2)	96	AM006C1	Tube Spanner
35	W040816	Battery Terminal Washer (2)	97	AM007	Tommy Bar
36	AM159	Solenoid	98	S231130	Throttle Cable Clamp
37	SH0412C	Solenoid Mounting Bolt (2)	99	AM249	Engine Mntg Plate Spacer (4)
38	N04CN	Solenoid Mntg. Bolt Nut (2)	100	S231151	Tank Clamp
39	N04C	Solenoid Terminal Nut (2)	101	S231152	Tank Clamp Grommet NLA
40	W040816	Solenoid Washer (2)	102	S231153	Tank Grommet
41	AM291	Oil Drain Pipe			
42	AM292	Oil Drain Nipple			
43	AM014	Ignition Switch			
	AM015	Ignition Switch Key (2)			
44	231121	Electric Clutch PTO Switch NLA			
45	AM211	Hourmeter			
46	AM289	Oil Pressure Warning Light			
47	AM229	Light Switch			
48	S231122	Height Control Switch NLA			
49	AM088	Throttle Lever			
50	PR0306R	Throttle Lever Rivet (2)			
51	SKIT61	Throttle Cable 16HP c/w Lever			
52	S231107	Remote Choke Control NLA			
53	231111A1	Petrol Tank			
54	B0416C	Tank Clamp Bolt			
55	N04CN	Tank Clamp Bolt Nut			
56	AM293	Petrol Tap			
57	231126	Petrol Cap NLA USE CF01			
58	231136	Fuel Line (16HP)			
59	AM294	Petrol Tap Grommet			
60	PR0306R	Relay Housing Pop Rivet			
61	W030820	Relay Hsng Rivet Washer			
62	231134	Relay			
63	S231114	Exhaust Manifold LH (16HP)			
	S231115	Exhaust Manifold RH (16HP)			
		Muffler (2) B&S P/N 391313			
64	AM180	Bonnet Spring (2)			

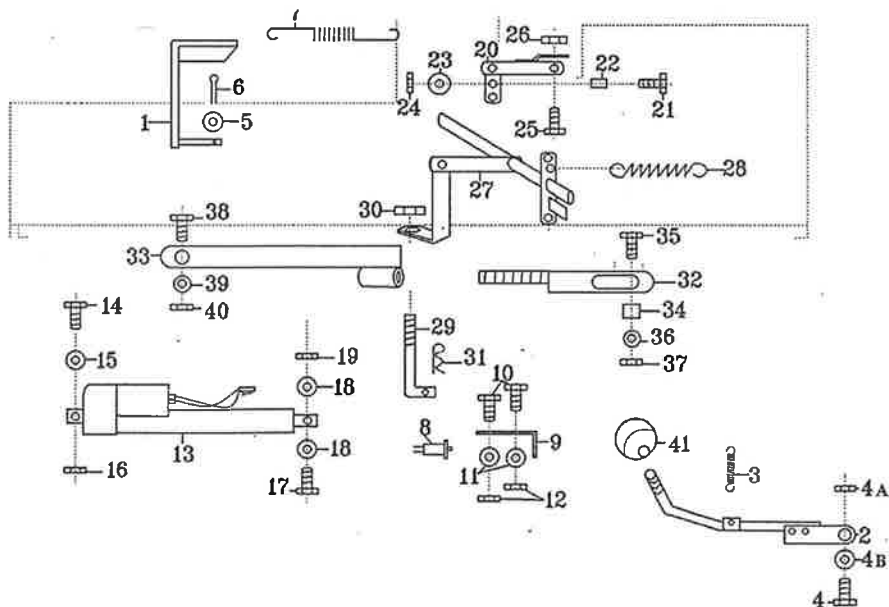
STOCKMAN 23H3-23E94-23K94-23C95-23K96
GROUP 12: RIGHT HAND SIDE OF CHASSIS

Ref No.	Part No.	Description
1	S231202	Clutch Rod Long
2	CP3-220	Clutch Rod Long Split Pin (2)
3	W071416	Clutch Rod Long Washer
4	AM182E94	Clutch Rod Pivot Plate
5	B0640C	Clutch Pivot Bolt
6	W061216	Clutch Pivot Bolt Washer
7	N06CN	Clutch Pivot Plate Nut
8	231201K94	Clutch Rod Short NLA
9	CP3-220	Clutch Rod Short Split Pin
10	RP01	Clutch Rod Short 'R' Pin
11	W051216	Clutch Rod Short Washer



STOCKMAN 23H3-23E94-23K94-23C95-23K96
GROUP 13: LEFT HAND OF CHASSIS

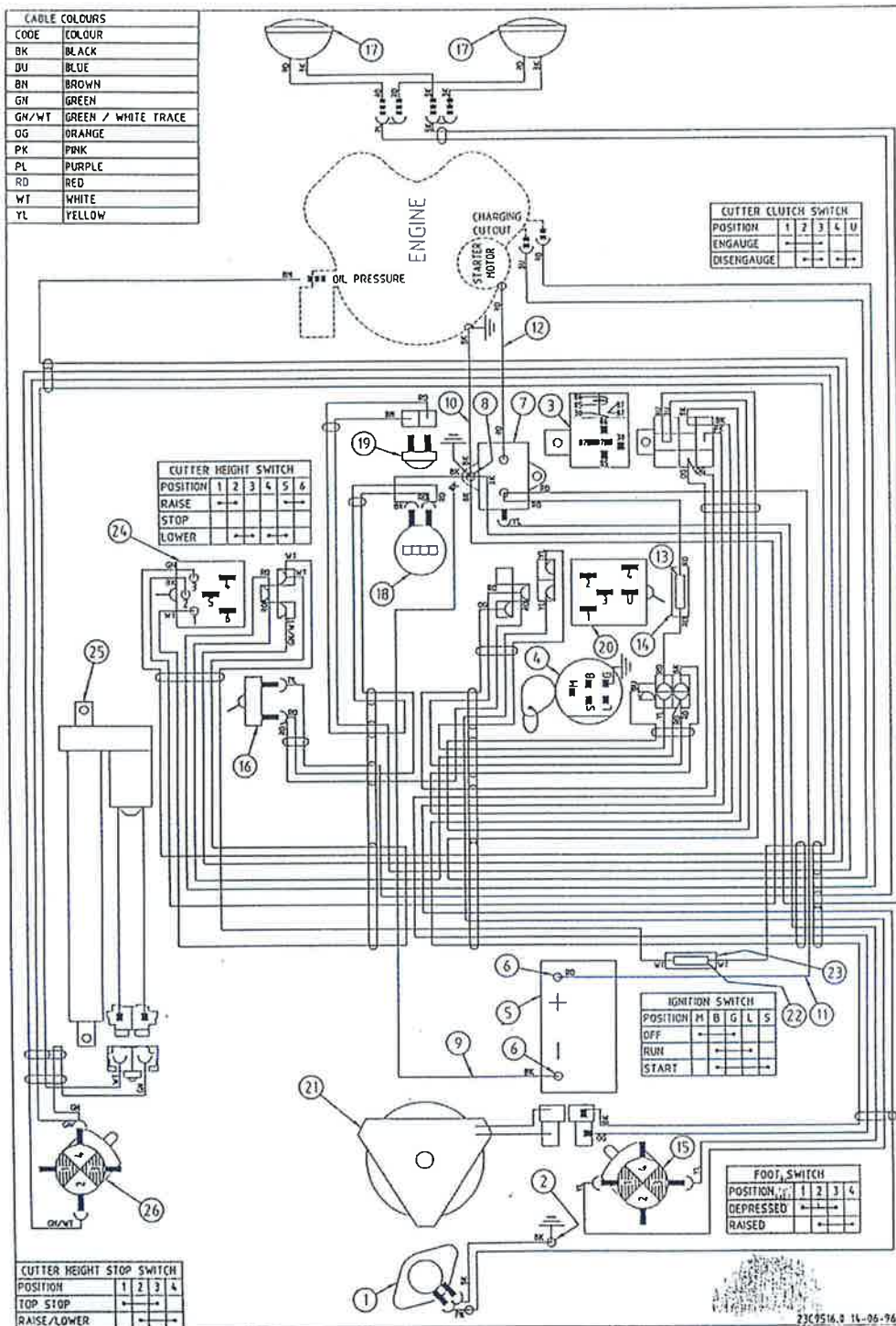
Ref No.	Part No.	Description	Ref No.	Part No.	Description
1	AM285	Brake Pedal	20	S231302	Height Indicator Plate
2	AM284G05	Hand Park Brake	21	B0632C	Height Indicator Link Pivot Bolt
3	AM288	Hand Brake Spring	22	AM249	Pivot Bolt Sleeve
4	B0624C	Hand Brake Bolt	23	W061216	Pivot Bolt Washer
4a	N06CN	Hand Brake Bolt Nut	24	N06CN	Pivot Bolt Nut
4b	W061216	Hand Brake Bolt Washer	25	SH0616C	Rear Lift/Indicator Link Bolt
5	W051216	Brake Pedal Washer	26	N06CN	Rear Lift/Indicator Link Bolt Nut
6	CP3-220	Brake Pedal Split Pin	27	S231303	Rear Lifting Link
7	AM183	Brake Pedal Spring	28	AM264	Tension Spring
8	AM092	Top Height Stop Switch NLA	29	AM185B0	Cutter Housing Lifting Link
9	S231304	Top Ht Stop Switch Bracket NLA	30	N06CN	Cutter Lifting Link Nut
10	SH0408C	Stop Switch Bracket Bolt (2)	31	RP02	Cutter Lifting Link 'R' Pin
11	W041216	Stop Switch Brkt Washer (2)	32	AM267	Front-Rear Conn. Rod Thrded
12	N04CN	Stop Switch Bracket Bolt Nut (2)	33	AM268	Front-Rear Conn Rod Bushed
13	231301	Height Adjuster Actuator NLA	34	AM249	Connecting Rod Bush
14	B0420C	Actuator Front Bolt	35	B0624C	Connecting Rod Rear Bolt
15	W040816	Actuator Front Bolt Washer	36	W0620HD	Conn Rod Rear Bolt Washer
16	N04CN	Actuator Front Bolt Nut	37	N06CN	Conn Rod Rear Bolt Nut
17	B0424C	Actuator Rear Bolt	38	SH0616C	Conn Rod Front Bolt
18	W040816	Actuator Rear Bolt Washer (2)	39	W061216	Conn Rod Front Bolt Washer
19	N04CN	Actuator Rear Bolt Nut	40	N06CN	Conn Rod Front Bolt Nut



STOCKMAN 23H3-23E94-23K94-23C95-23K96

GROUP 14: ELECTRICAL COMPONENTS

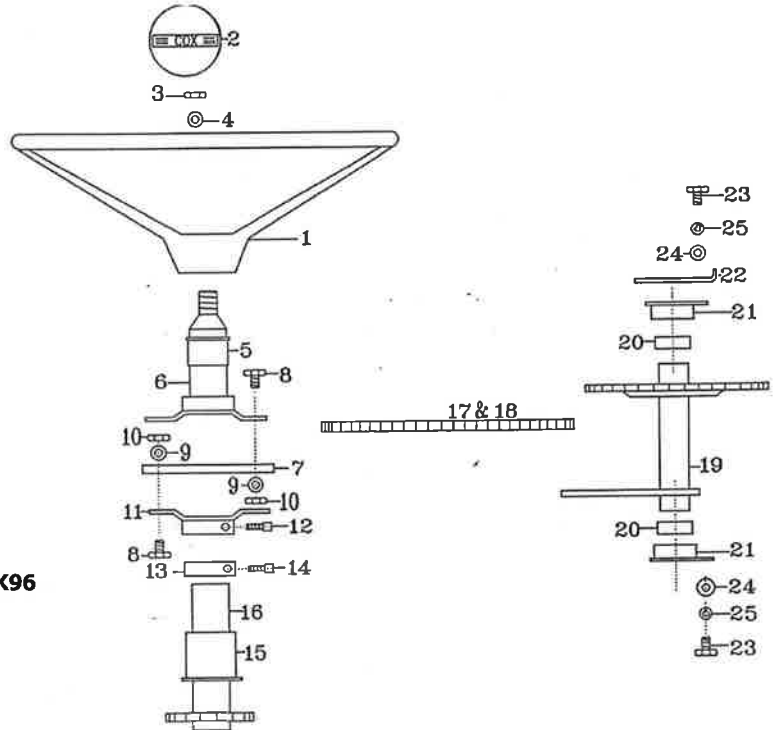
Ref No.	Part No.	Description	No.	No.	Description
1	AM165	Seat Micro Switch NLA	13 *	S231403	Fuse (15 amp) NLA
2	SH0408C N04CN	Seat Micro Switch Earth Screw Seat Micro Switch Earth Nut	14 *	SAM160	Fuse Holder NLA
3 *	231134	Relay	15	AM092	Foot Micro Switch NLA
4	AM014 AM015	Ignition Switch Ignition Switch Key	16	AM229	Light Switch
5		Battery	17	AM228	Head Lamp (2)
6	SH0412W N04CN	Battery Terminal Screw (2) Battery Terminal Nut (2)	18	AM227	Head Lamp Holder (2)
7	AM159	Solenoid	19	AM211	Hourmeter
8	SH0412C N04CN	Solenoid Earth Screw Solenoid Earth Nut	20	AM289	Oil Pressure Warning Light
9	13116	Lead Earth-Battery-Chassis	21	231121	Electric PTO Clutch Switch
10	13116	Lead Earth-Engine-Solenoid	22 *	232201	Electric PTO Clutch
11	13115	Lead-Battery-Solenoid (Red)	23 *	S231404	Height Actr Fuse (4 amp) NLA
12	13115	Lead-Engine-Solenoid (Red)	24 *	SAM160	Height Actuator Fuse Holder NLA
			25	231122	Cutter Height Switch NLA
			26	231301	Cutter Height Actuator NLA
				AM092	Cutter Stop Micro Switch NLA
				*S231401	Wiring Loom NLA



STOCKMAN 23H3-23E94-23K94-23C95-23K96

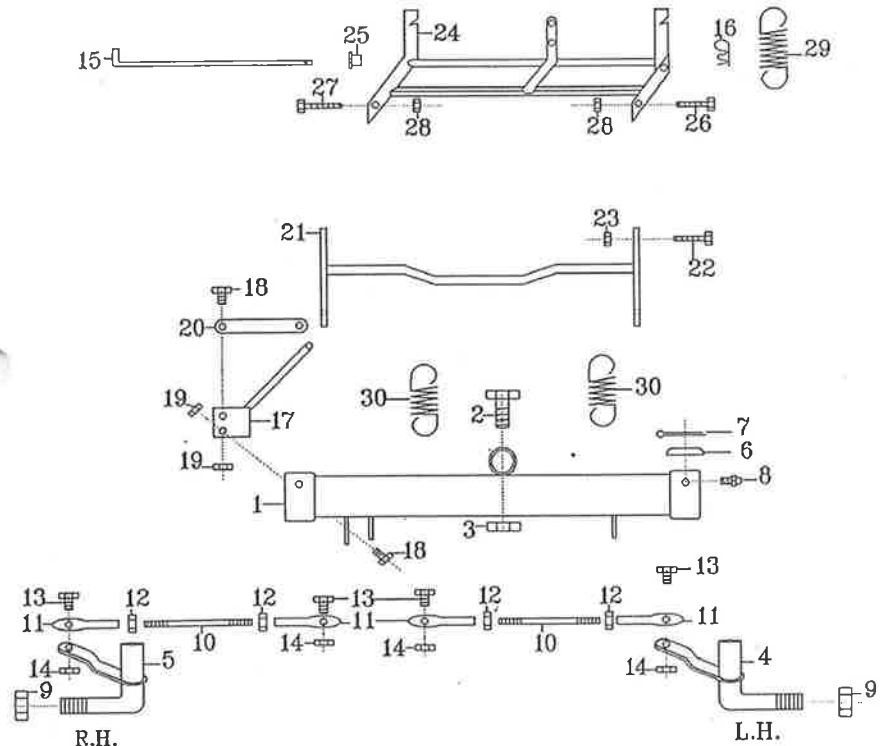
GROUP 15: STEERING COMPONENTS

Ref No.	Part No.	Description
1	SKIT37	Steering Wheel & Emblem
	AM167M8	Steering Wheel
2	AM225	Steering Wheel Emblem
3	N06CN	Steering Wheel Nut
4	W061216	Steering Wheel Washer
5	AM017C1	Top Steering Shaft Bush
6	AM250	Steering Shaft Upper
7	AM25399J	Steering Shaft Universal
8	SH0416C	Universal Mounting Bolt (4)
9	W041216	Universal Mntg Washer (4)
10	N04CN	Universal Mntg Bolt Nut (4)
11	AM252	Lower Flange Bracket
12	GS0404C	Flange Brkt Ret. Grub Screw
13	AM066	Lock Collar
14	GS0404C	Lock Collar Set Screw
15	AM017C1	Lower Steering Bush (2)
16	S231501	Steering Shaft Lower
17	AM018	Steering Chain
18	SAM019	Steering Chain Link
19	AM331	Steering Idler Shaft 23K94/23C95/23K96
	SAM254	Steering Idler Shaft 23H3/23E94
20	AM215	Idler Shaft Bush (2)
21	AM255	Idler Shaft Mntg Bracket (2)
22	S231502	Adjuster Plate NLA
23	SH0512C	Idler Mntg Bracket Bolt (4)
24	W051216	Idler Mntg Brkt Washer (4)
25	W055	Idler Mntg S/P Washer (4)



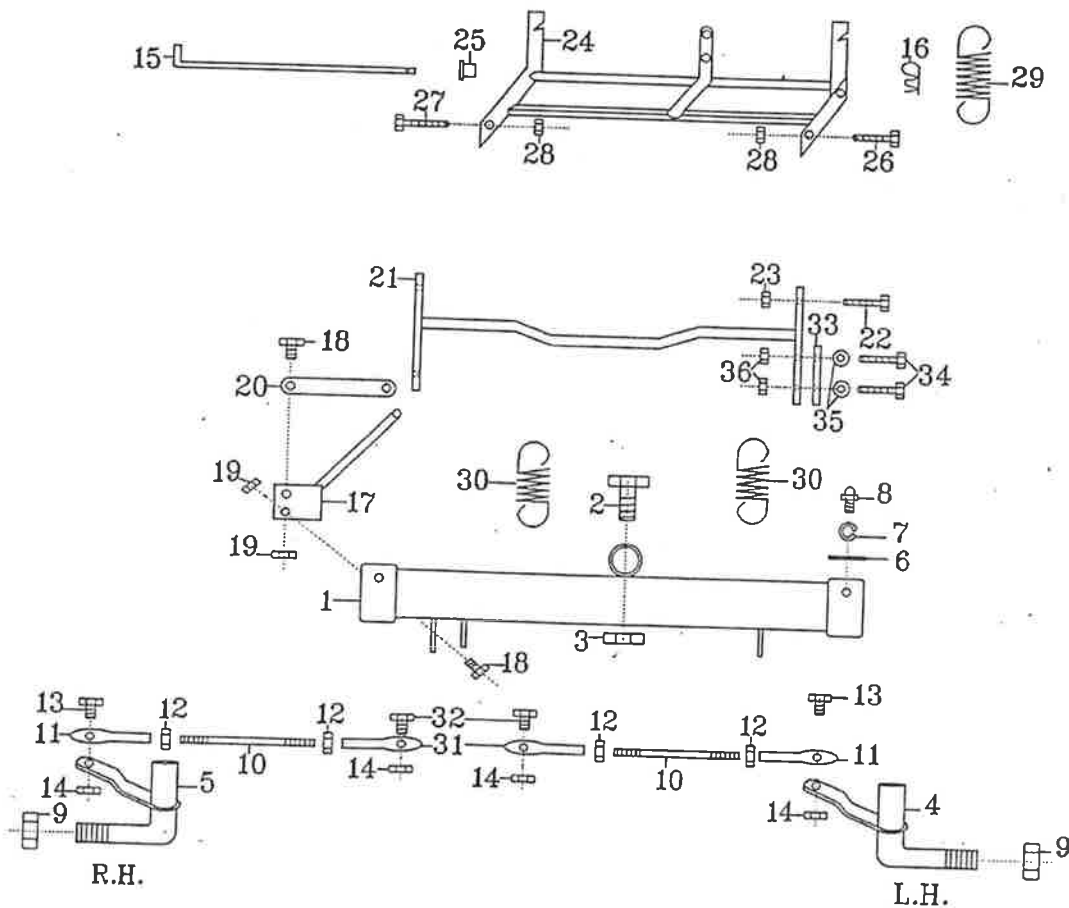
STOCKMAN 23H3-23E94 GROUP 16: FRONT AXLE COMPONENTS

Ref No.	Part No.	Description
1	S231601R	Front Axle Beam
2	B1240W	Front Axle Pivot Bolt NLA
3	N12CN	Front Axle Pivot Bolt Nut
4	AM067	Front Stub Axle LH NLA
5	AM068	Front Stub Axle RH NLA
6	AM069	Stub Axle Cap (2)
7	CP3-225	Stub Axle Split Pin (2)
8	GNTF3	Grease Nipple (2)
9	NHM20X1.5T	Front Wheel Nut (2)
10	AM256	Tie Rod (2)
11	AM020	Tie Rod End (4)
12	N06F	Tie Rod End Lock Nut (4)
13	B0620C	Tie Rod End Bolt (2)
14	N06CN	Tie Rod End Bolt Nut (4)
15	AM039S2	Cutter Housing Pivot Rod NLA
16	RP02	Hsng. Pivot Rod 'R' Pin
17	S231602	Disengaging Lever
18	SH0616C	Diseng. Lever Mntg. Bolt (2)
19	N06CN	Diseng. Lever Mntg. Nut (2)
20	S231603	Disengaging Lever Link
21	S231604	Front Axle Connecting Link
22	SH0616C	Conn Link Mtg Bolt (2)
23	N06CN	Conn Link Mtg. Bolt Nut (2)
24	S231605	Cutter Housing Conn. Link NLA
25	AM230	Connecting Link Bush (2)
26	SH0616C	Conn Link Mtg Bolt LH
27	B0620C	Conn Link Mtg Bolt RH
28	N06CN	Conn Link Mtg Bolt Nut (2)
29	AM145	Weight Comp Spring
30	AM040	Cutter Belt Tens. Spring (2)



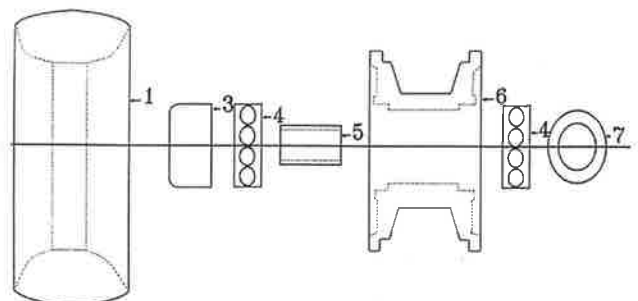
STOCKMAN 23K94-23C95-23K96 GROUP 16: FRONT AXLE COMPONENTS

Ref No.	Part No.	Description	Ref No.	Part No.	Description
1	S231607	Front Axle Beam	19	N06CN	Diseng. Lever Mntg. Nut (2)
2	B1240W	Front Axle Pivot Bolt NLA	20	S231603	Disengaging Lever Link
3	N12CN	Front Axle Pivot Bolt Nut	21	S231606	Front Axle Connecting Link
4 *	AM333	Front Stub Axle LH	22	SH0616C	Conn Link Mtg Bolt (2)
5 **	AM334	Front Stub Axle RH	23	N06CN	Conn Link Mtg. Bolt Nut (2)
6 */**	AM336	Stub Axle Cap (2)	24	S231605	Cutter Housing Conn. Link NLA
7 */**	C02	Stub Axle Circlip (2)	25	AM230	Connecting Link Bush (2)
	W203806	Front Wheel Spacer (2)	26	B0624C	Conn Link Mtg Bolt LH
8 */**	GNTF3	Grease Nipple (2)	27	B0620C	Conn Link Mtg Bolt RH
9	NHM20X1.5T	Front Wheel Nut (2)	28	N06CN	Conn Link Mtg Bolt Nut (2)
10	AM256	Tie Rod (2)	29	AM145	Weight Comp Spring
11	AM020	Tie Rod End (2)	30	AM040	Cutter Belt Tens. Spring (2)
12	N06F	Tie Rod End Lock Nut (4)	31	AM337	Inner Tie Rod End (2)
13	B0620C	Tie Rod End Bolt (2)	32	B0624C	Inner Tie Rod End Bolt (2)
14	N06CN	Tie Rod End Bolt Nut (4)	33	AM304	Axle Conn Link Adjuster
15	AM039S2	Cutter Housing Pivot Rod NLA	34	SH0516C	Conn. Link Adj. Bolt (2)
	13016	Cutter Pin (New Type)	35	W051216	Conn. Link Adj. Washer (2)
	NM6NT	Nut (1)	36	N05CN	Axle Conn. Link Adj. Nut (2)
	SH0616W	Set Screw (1)	*	SKIT89	Stub Axle Left Hand
16	RP02	Hsng. Pivot Rod 'R' Pin	**	SKIT90	Stub Axle Right Hand
17	S231602	Disengaging Lever			
18	SH0616C	Diseng. Lever Mntg. Bolt (2)			



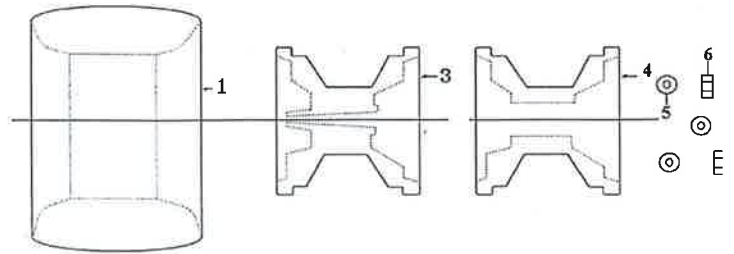
STOCKMAN 23H3-23E94-23K94-23C95-23K96 GROUP 17: FRONT WHEEL COMPONENTS

Ref No.	Part No.	Description
1	TT600x698A	Front Wheel Tyre & Tube (2)
	STU600x6	Front Wheel Tube (2)
3	AM07099C	Hub Cap (2)
4	BB204212N	Bearing (4)
5	AM021	Bearing Spacer (2)
6	AM193M9	Wheel Hub (2)
7	W203902	Inner Washer (2) 23E94-23H3
	W203806	Front Wheel Spacer (2) 23K94-23C95-23K96



STOCKMAN 23H3-23E94-23K94-23C95-23K96 GROUP 18: REAR WHEEL COMPONENTS

Ref No.	Part No.	Description
1	TT850x8	Rear Wheel Tyre & Tube (2)
	STU850x8	Rear Wheel Tube (2)
3	AM194	Wheel Hub (2)
4*	AM305	Wheel Hub L/H
5*	NF06CN	Wheel Nut (3)
6*	W061216	Wheel Nut Washers (3)



* Differential Model Only (23E94)

*Differential Model Only (25K94)

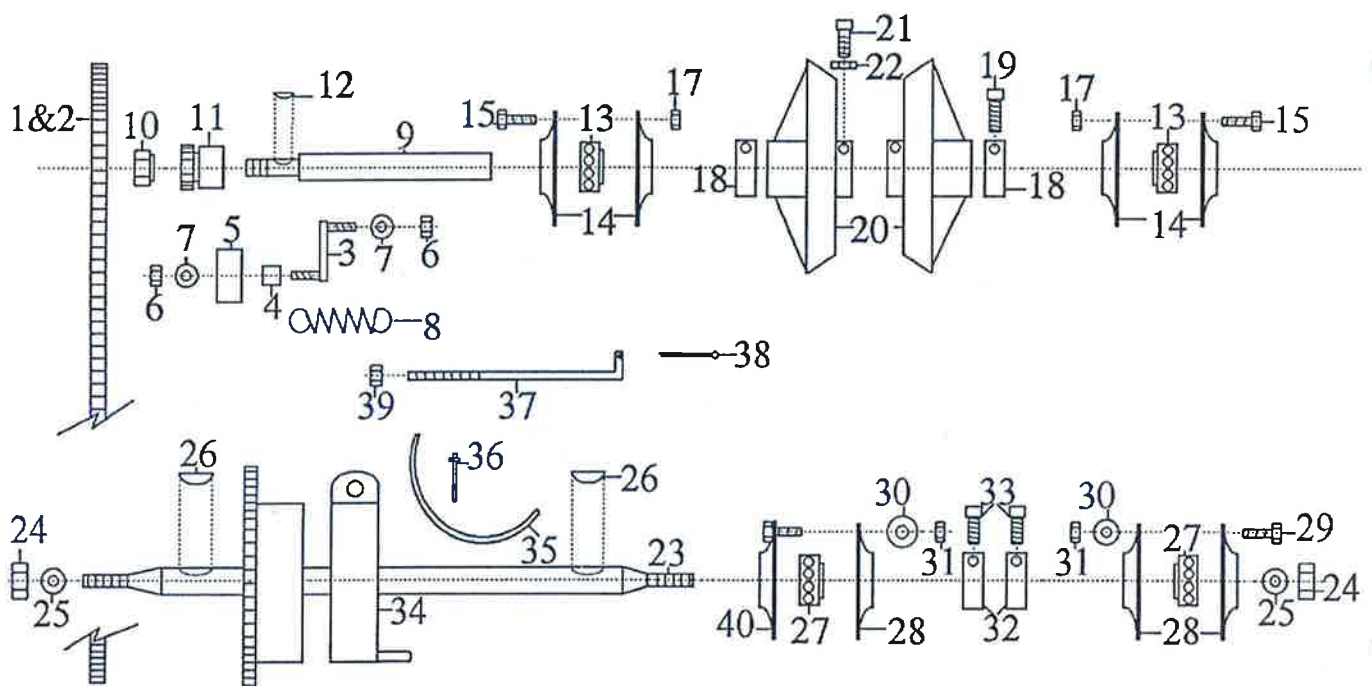
STOCKMAN 23H3-23H94-23K94 GROUP 19: DRIVE COMPONENTS

Ref No.	Part No.	Description
1	231901	Drive Chain Incl Link
2	S231904	Connecting Link
3	SAM245	Chain Tensioner (2)
4	AM275	Spacer (2) 23K94
	AM231	Spacer (4) 23E94-23H3
5	PIFBB126598A	Bearing (2) 23K94
	BB256217N	Bearing (2) 23E94-23H3
6	N06CN	Ret. Nut (4)
7	W061216	Ret. Nut Washer (6)
8	AM180	Chain Tensioning Spring
9	SAM071E95	Intershaft
10	SAM022	Intershaft Nut
11	SKIT65	Intershaft Sprocket & Key
12	SK03	Intershaft Sprocket Key
13	BB25SAN	Intershaft Bearing (2)
14	AM024	Intershaft Bearing Flange (4)
	SH0612C	Bearing Flange Bolt (6)
17	N06CN	Bearing Flange Bolt Nut (6)
18	AM025	Intershaft Lock Collar (2)
19	GS0505C	Lock Collar Set Screw (2)
20	AM197	Clutch Plate (2)
21	SS0612W	Clutch Plate Set Screw Set (4)
23	23190308J	Rear Axle
24	N10F	Rear Axle Nut (2)
*	N10F	Rear Axle Nut (1)

Ref No.	Part No.	Description
25	W102016	Rear Axle Washer (2)
*	W102016	Rear Axle Washer (1)
	W10S	Rear Axle S/P Washer (2)
*	W10S	Rear Axle S/P0 Washer (1)
26	K18	Rear Axle Key (2)
*	K18	Rear AxLe Key (1)
27	BB25SAN	Rear Axle Bearing (2)
28	AM024	Rear Axle Bearing Flange (3)
29	SH0616C	Bearing Flange Bolt (3)
30	W061216	Bearing Flange Washer (3)
31	N06CN	Bearing Flange Bolt Nut (6)
32	AM025	Rear Axle Lock Collar (2)
33	GS0505C	Lock Collar Set Screw (2)
34	KIT16	Drum Brake Incl Lining
35	AM200	Brake Band Lining
36	PRO205	Brake Lining Rivet (4)
37	AM266	Drum Brake Rod
38	CP3-220	Drum Brake Rod Split Pin
39	N05CN	Drum Brake Rod Nut
	W051216	Brake Drum Washer
40	AM202	Rear Axle Bearing Flange L/H
*	AM024	Rear Axle Bearing Flange R/H

SKIT6898A Chain Adj Dual Bearing Kit

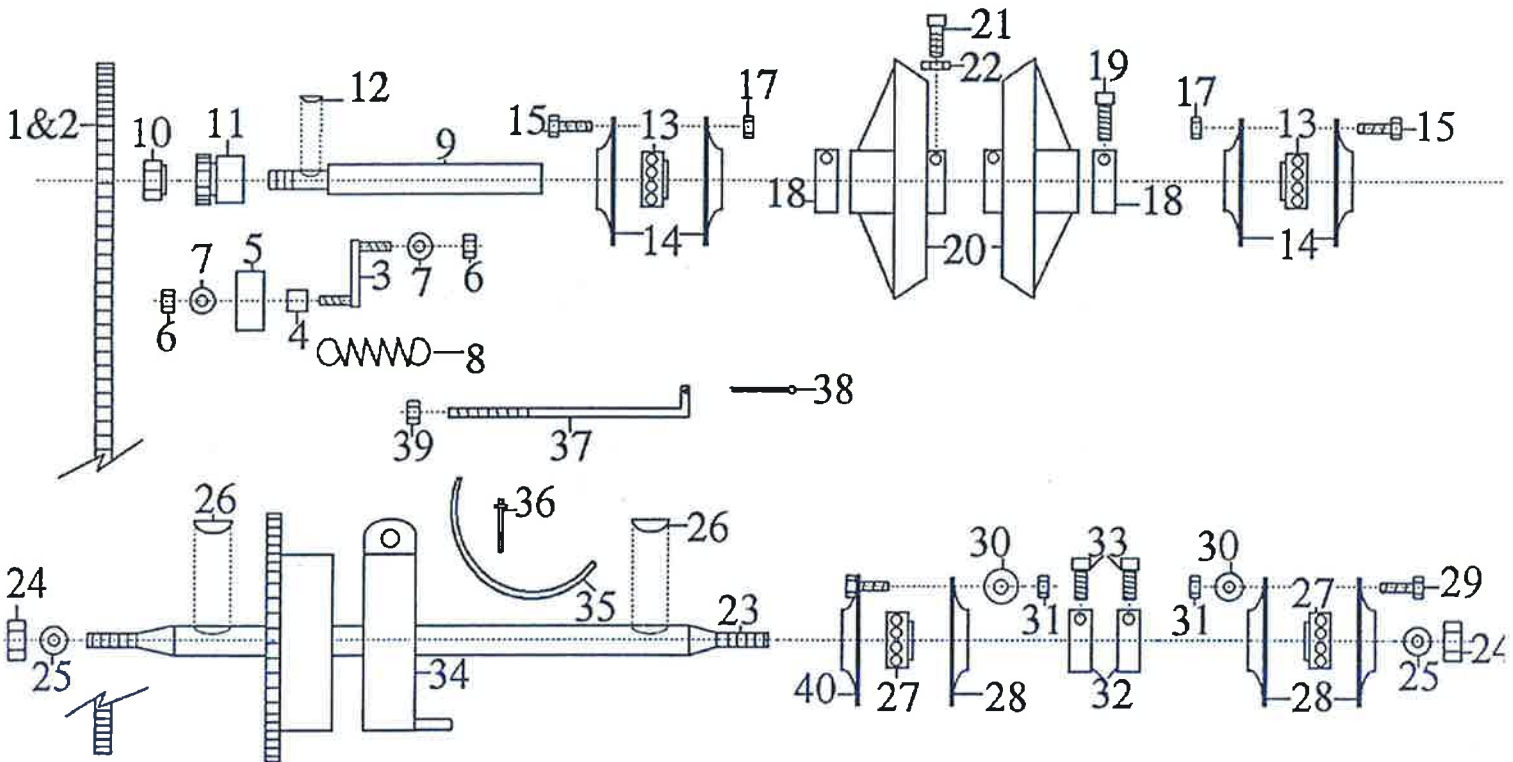
* Differential Model Only (23K94)



STOCKMAN 23C95 GROUP 19: DRIVE COMPONENTS

Ref No.	Part No.	Description
1 **	231901	Drive Chain Incl Link
2	S231904	Connecting Link
3	AM362	Chain Tensioner (2)
4	SH0516C	Tensioner nut (2)
5	PIFBB126598A	Bearing (2)
6	N06CN	Ret. Bolt (2)
7	W061216	Ret. Nut Washer (2)
7a	W051216	Ret. Bolt Washer (2)
8	AM288	Chain Tensioner Spring
9	SAM071E95	Intershaft
10	SAM022	Intershaft Nut
11**	SKIT65	Intershaft Sprocket & Key
12	SK03	Intershaft Sprocket Key
13	BB25SAN	Intershaft Bearing (2)
14	AM024	Intershaft Bearing Flange (4)
15	SH0612C	Bearing Flange Bolt (6)
16	W061216	Bearing Flange Washer (6)
17	N06CN	Bearing Flange Bolt Nut (6)
18	AM025	Intershaft Lock Collar (2)
19	GS0505C	Lock Collar Set Screw (2)
20	AM197	Clutch Plate (2)
21	SS0612W	Clutch Plate Set Screw Set (4)
For Fixed Type Chain Adjuster		
	SAM347	Chain Tensioner NLA
	N05CN	Chain Tensioner Nut
	W050816	Chain Tensioner Washer
	PIFBB126598A	Bearing
	SH0608C	Ret. Bolt (3) NLA
	W061216	Ret. Bolt Washer (3)
	WS06081.5	Ret Bolt S/P Washer (3)

Ref No.	Part No.	Description
23**	23190308J	Rear Axle
24	N10F	Rear Axle Nut (2)
*	N10F	Rear Axle Nut (2)
25	W102016	Rear Axle Washer (2)
*	W102016	Rear Axle Washer
	W10S	Rear Axle S/P Washer (2)
*	W10S	Rear Axle S/P Washer
26	K18	Rear Axle Key (2)
*	K18	Rear AxLe Key
27	BB25SAN	Rear Axle Bearing (2)
28	AM024	Rear Axle Bearing Flange (4)
29	SH0616C	Bearing Flange Bolt (3)
30	W061216	Bearing Flange Washer (6)
31	N06CN	Bearing Flange Bolt Nut (6)
32	AM025	Rear Axle Lock Collar (2)
33	GS0505C	Lock Collar Set Screw (2)
34	KIT16	Drum Brake c/w Lining
35	AM200	Brake Band Lining
36	PR0205	Brake Lining Rivet (4)
37	AM266	Drum Brake Rod
38	CP3-220	Drum Brake Rod Split Pin
39	N05CN	Drum Brake Rod Nut
	W051216	Brake Drum Washer
40	AM202	Rear Axle Bearing Flange L/H
*	AM024	Rear Axle Bearing Flange R/H
SKIT6898A Duel Chain Adj		
**	SKIT119	Sprocket & Chain (H/Duty)
	SKIT120	Intershaft Kit (New Type)
*	Differential Model Only	

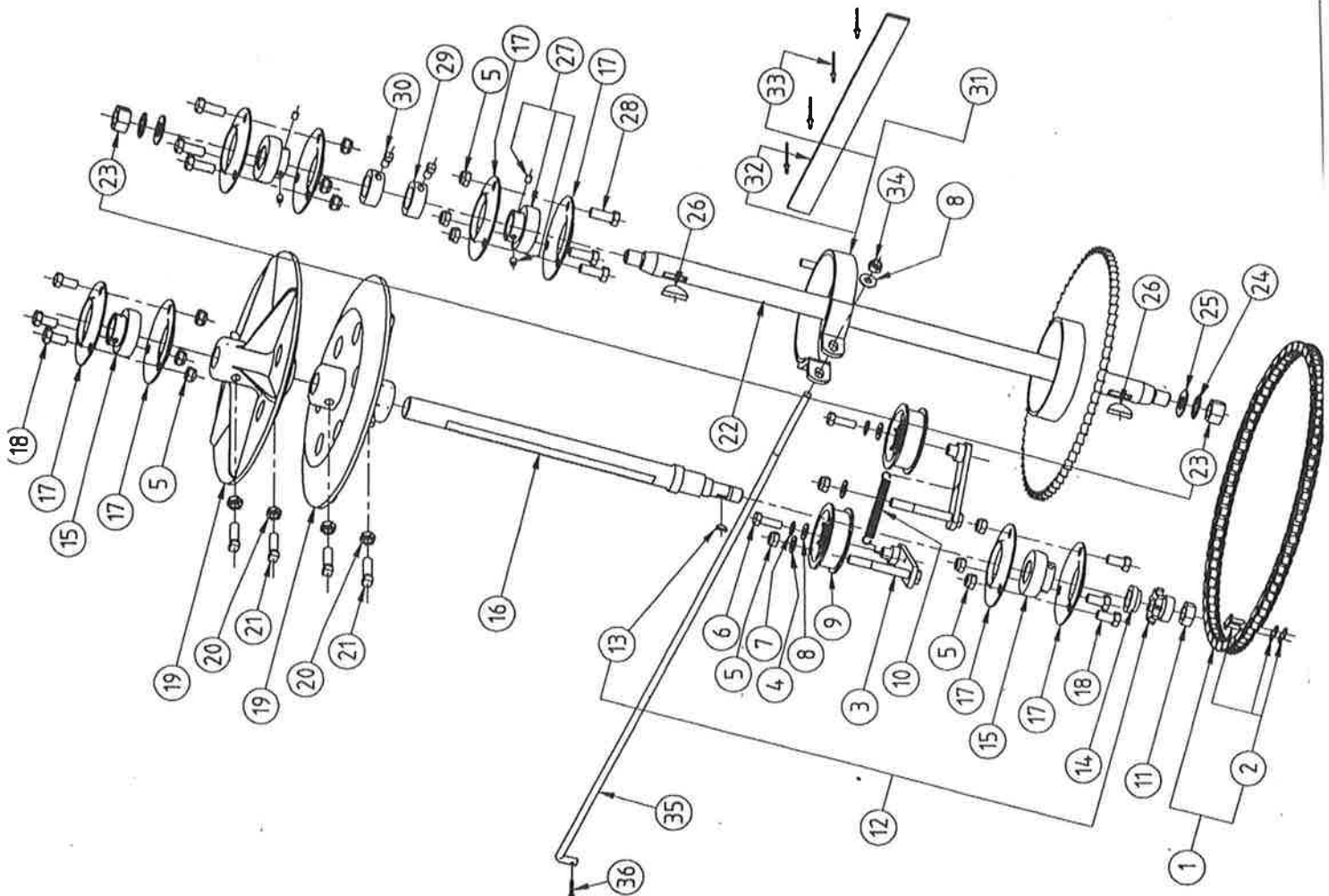


STOCKMAN 23K96 GROUP 19: DRIVE COMPONENTS

Ref. No.	Part No.	Description
1	231901	Drive Chain Incl. Link
2	S231904	Connecting Link
3	AM362	Chain Tensioner Arm (2)
4	W061216	Washer (2)
5	N06CN	Nyloc Nut (14)
6	SH0512C	Screw (2)
7	W05S	Lock Washer (2)
8	W051216	Washer (3)
9	PIFBB126598A	Pulley Idler Flange Bearing (2)
10	AM288	Tension Spring
11	N10FT	Thin Nut
12	SKIT65	Sprocket & Key
13	SK03	Woodruff Key
14	AM364	Spacer Sleeve
15	BB25SAN	Bearing (fit without grub screw) (2)
16	AM363	Clutch Plate Mounting Shaft
17	AM024	Bearing Flangette (8)
18	SH0612C	Screw (6)
19	AM197	Clutch Plate (2)
21	SS0612W	Clutch Plate Set Screw Set (4)
22	23190308J	Rear Axle
	*AM338	Differential Axle NLA USE CA130

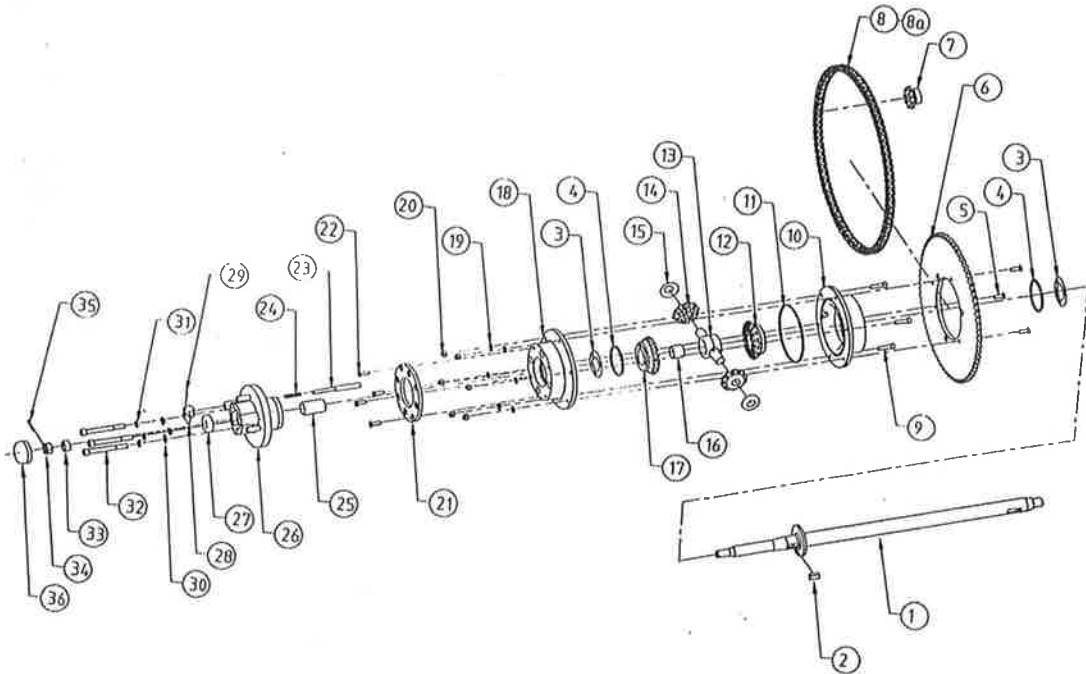
Ref. No.	Part No.	Description
23	N10F	Rear Axle Nut (2)
*	N10F	Rear Axle Nut (1)
24	W10S	Lock Washer (2)
*	W10S	Lock Washer (1)25
		W102016
		Washer (2)
*	W102016	Washer (1)
26	K18	Woodruff Key (2)
*	K18	Woodruff Key (1)
27	BB25SAN	Bearing (fit with grub screw) (2)
28	SH0616C	Screw (6)
29	AM025	Lock Collar (2)
30	GS0505C	Set Screw (2)
31	KIT16	Brake Bank incl. Lining & Rivets
32	AM200	Brake Lining
33	PRO205	Rivets (4)
34	N05CN	Nyloc Nut
35	AM266	Drum Brake Rod
36	CP3-220	Drum Brake Rod Spilt Pin

* **Differential Model Only**



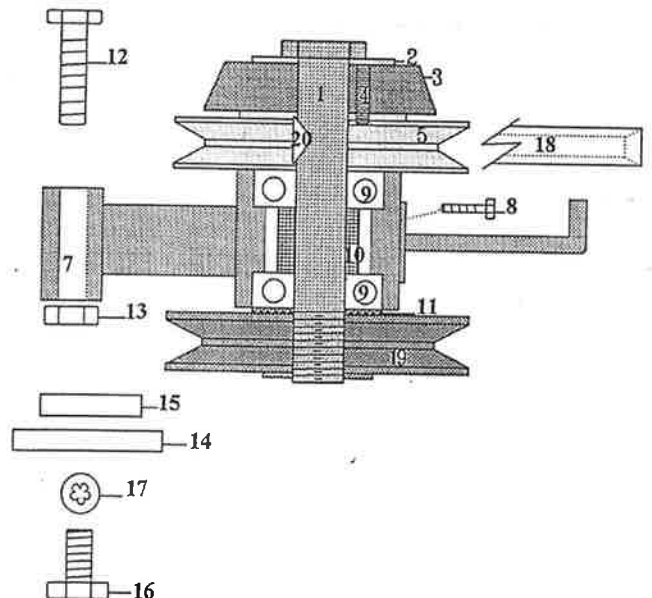
STOCKMAN 23K94-23C95-23K96 GROUP 19A: DIFFERENTIAL COMPONENTS

Ref No.	Part No.	Description	Ref No.	Part No.	Description
1	AM322	Rear Axle	20	NM6NT	Diff. Locking Screw Nut (6)
	AM338	Diff Axle Assy USE CA130	21	AM311	Locking Ring
2	AM339	Gear Key	22	CS5SM6x16	Locking Ring Screws (4)
3	AM323	Gasket (2)	23	AM309	Locking Pin
4	AM319	O-Ring (2)	24	AM308	Locking Pin Comp. Spring
5	CS5SM6x35	Sprocket Locking Screws (3)	25	AM313	Wheel Adaptor Bush
6	AM321	Sprocket	26	AM310	Wheel Adaptor
7	SKIT65	Intershaft Sprocket & Key	27	BB15329N	Wheel Adaptor Bearing
8	231901	Drive Chain incl Link	28	AM307	Unlocking Lever NLA
8a	S231904	Drive Chain Link	29	DP03	Unlocking Lever Roll Pin
9	CH5SM6x25	Diff. Case Lock Screws (3)	30	AM324	Retaining Bolt Washers (3)
10	AM320	Differential Case R/H	31	WSM8X2X2	Ret. Bolt Spring Washer (3)
11	AM325	"O" Ring	32	CH5BM8x75	Retaining Bolt (3)
12	AM306	Gear Bevel Keyed	33	AM340	Wheel Adaptor Sleeve
13	AM318	Pinion	34	NSO8F	Wheel Adaptor Axle Nut
14	AM316	Gear Bevel Pinion (2)	35	CP3-225	Wheel Axle Split Pin
15	AM317	Thrust Ring (2)	36	AM07099C	Hub Cap
16	AM314	Gear Level Drive Bush		SKIT92	Seal Kit
17	AM315	Gear Bevel Drive		SKIT93	Bearing/Bush Kit
18	AM312	Differential Case L/H		SKIT95	Unlocking Lever Kit
19	W06MN	Diff. Lock Screw Washer (6)			



STOCKMAN 23H3-23E94-23K94-23C95-23K96 GROUP 20: CLUTCH ARM & COMPONENTS

Ref No.	Part No.	Description
1	AM204J3	Clutch Shaft
2	W204305	Clutch Shaft Washer
3	KIT187	Clutch Cone
4	PDM0630	Clutch Cone Pin
5	AM139Q2	Clutch Pulley
7	S232001K94	Clutch Arm Yoke NLA
8	SH0512C	Clutch Arm Yoke Retaining Bolt (2)
9	BB205215NS	Clutch Arm Bearing (2)
10	AM072	Bearing Spacer
11	W203902	Clutch Shaft Washer
12	B0652C	Clutch Arm Pivot Bolt
13	N06CN	Clutch Arm Pivot Bolt Nut
14	AM208	Clutch Adjusting Plate
15	AM209	Clutch Adjusting Tapped Plate (2)
16	SH0616C	Adjusting Plate Bolt (2)
17	W06S	Bolt Lock Washer (2)
18	V28	Drive Belt 23K94 23C95 23K96
19	SVA77	Forward/Reverse Drive Belt 23H3
19	S232002	Clutch Pulley Lower NLA
20	SK09	Clutch Pulley Key



STOCKMAN 23H3 GROUP 22: ELECTRIC CLUTCH & COMPONENTS

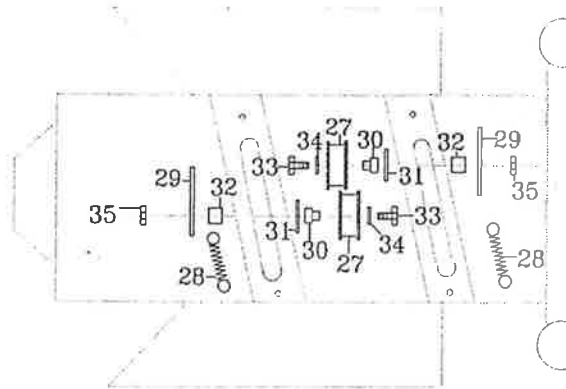
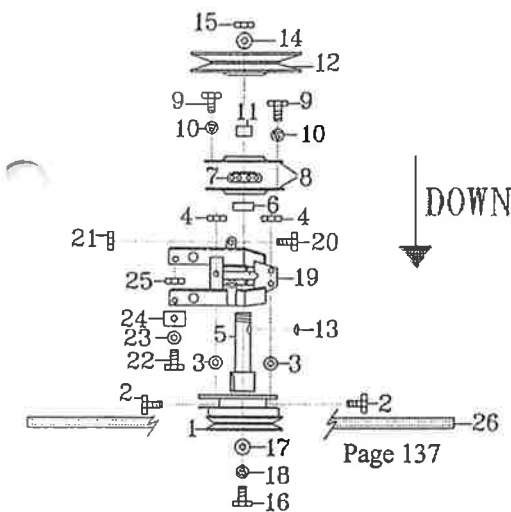
Ref No.	Part No.	Description
1	232201	Electric Clutch
2	SH0512C	Electric Clutch Locating Bolt (3)
3	W051216	Elec Clutch Locating Washer (3)
4	N05CN	Electric Clutch Locating Nut (3)
5	S232202Q2	Electric Clutch Drive Shaft NLA
6	AM269	Clutch to Bearing Spacer
7	BB20SAN	Bearing NLA
8	S232204	Bearing Flange (2) NLA
9	SH0508C	Bearing Flange Bolt (2)
10	W05S	Brg Flange S/Proof Washer (2)
11	S232205	Bearing to Pulley Spacer
12	S232206	Top Pulley
13	SK09	Top Pulley Key
14	W204303	Top Pulley Washer
15	NHM20X1.5T	Top Pulley Nut
20	SH0512C	Locating Bracket Bolt (2)
21	N05CN	Locating Bracket Bolt Nut (2)
22	B0420C	Stabilising Bolt (2)
23	W040816	Stabilising Bolt Washer(2)

Ref No	Part No	Description
24	S232209	Stabilising Bolt Plate (2)
25	N04CN	Stabilising Bolt Plate Nut (2)
26	V15	Engine to Electric Clutch Belt
27	PIFBB126598A	Belt Tensioner Pulley (2)
28	AM288	Belt Tensioner Spring (2)
29	S232211	Tensioner Spring Plate (2) NLA
30	AM275	Belt Tensioner Spacer (2)
31	W0620HD	Spacer Washer (2)
32	AM249	Belt Tensioner Sleeve (2)
33	B0624C	Belt Tensioner Bolt (2)
34	W061216	Belt Tensioner Washer (2)
35	N06CN	Belt Tensioner Nut (2)

NOTE CUTTER BELT SIZES

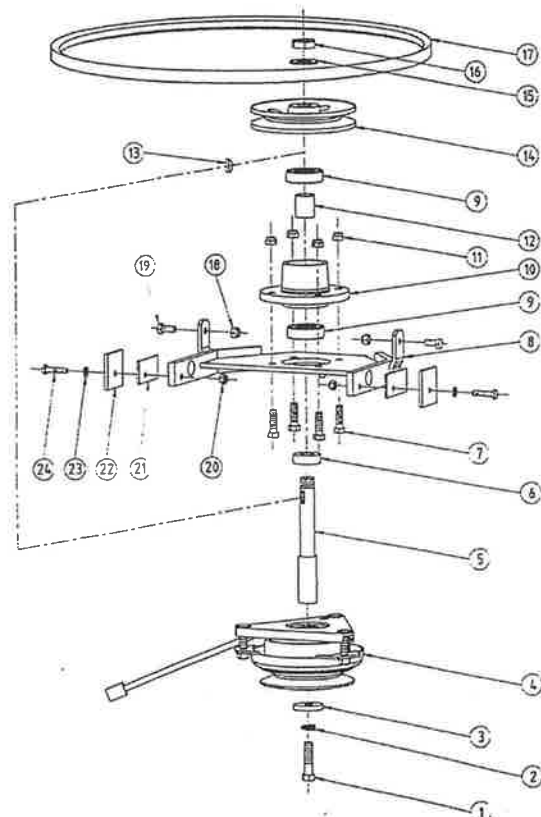
SV21 38" Cutter
SV18 48" Cutter

SKIT81197 Cutter Drive Kit with Electric Clutch



STOCKMAN 23E94-23K94-23C95-23K96 GROUP 22: ELECTRIC CLUTCH & COMPONENTS

Ref No	Part No	Description
1	B0724F	Electric Clutch Tension Bolt
2	WS071006	Electric Clutch Spring Washer
3	W072606	Electric Clutch Retaining Washer
4	232201	Electric Clutch
5	S232203I97	Electric Clutch Shaft NLA
6	272118	Electric Clutch Shaft Spacer
7	B0620C	Electric Clutch Locating Bolt (4)
8	S232210	Electric Clutch Mounting Bracket
9	BB205215NS	Bearing (2)
10	AM242	Top Bearing Housing
11	N06CN	Electric Clutch Locating Nut (4)
12	AM021	Bearing Spacer
13	SK09	Top Pulley Key
14	S232206	Top Pulley
15	W203902	Top Pulley Washer
16	NHM20X1.5T	Top Pulley Nut
17	SV14	Electric Clutch to Engine Belt
18	N05CN	Locating Bracket Bolt Nut (2)
19	SH0512C	Locating Bracket Screw (2)
20	N04CN	Stabilising Bolt Plate Nut (2)
21	S232212	Mounting Bracket Spacer (2)
22	S232209	Stabilising Bolt Plate (2)
23	W040816	Stabilising Bolt Washer (2)
24	B0420C	Stabilising Bolt (2)

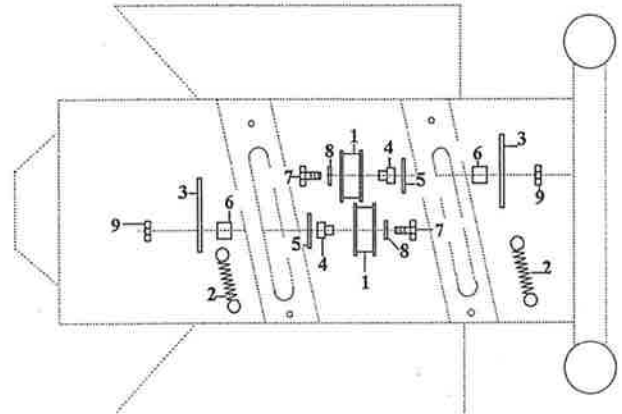


STOCKMAN 23E94-23K94 GROUP 22: BELT IDLER & COMPONENTS

Ref No	Part No	Description
1	PIFBB126598A	Belt Tensioner Pulley (2)
2	AM288	Belt Tensioner Spring (2)
3	S232211	Belt Tensioner Spring Plate (2) NLA
4	AM275	Belt Tensioner Spacer (2)
5	W0620HD	Spacer Washer (2)
6	AM249	Belt Tensioner Sleeve (2)
7	B0624C	Belt Tensioner Bolt (2)
8	W061216	Belt Tensioner Washer (2)
9	N06CN	Belt Tensioner Nut (2)

****NOTE CUTTER BELT SIZES****

V06	38" Cutter
V08	48" Cutter



STOCKMAN 23H3-23E94-23K94-23C95-23K96 GROUP 21: 32" MOWING ATTACHMENT

Ref No.	Part No.	Description
1	SKIT122	C/Housing incl Guard & Bushes
2	AM259	Deflector
2a	AM272	Deflector Spring
3	AM273	Deflector Rod
4	AM274	Deflector Ratchet Plate
	W041216	Deflector Bracket Washer
5	AM052E1	Deflector Bracket
6	SH0412C	Deflector Bracket Bolt (2)
7	N04CN	Deflector Brkt Bolt Nut (2)
11	AM036D9	Cutter Housing Roller
12	AM037	Cutter Roller Shaft
13	CP3-225	Cutter Roller Shaft Split Pin
14	SKIT08	Bring Hsg c/w Belt Guides 23H3/23E94
*	S232102	Bearing Housing 23K94/23C95/23K96
	AM073	Belt Guide (2) 23H3/23E94
	B0416C	Belt Guide Bolt (2)
	N04CN	Belt Guide Nut (2)
15	*272118	Spacer 23K94
18	B0620C	Cutter Brng Hsng. Bolt (4)
19	NF06CN	Bearing Hsng. Bolt Nut (4)
20	13181	Cutter Shaft 23H3/23E94
*	23210199D	Cutter Shaft 23K94/23C95/23K96 NLA
21	SK09	Cutter Shaft Key
22	BB205215NS	Cutter Shaft Bearing (2)
23	AM029	Bearing Spacer 23H3/23E94
*	232103	Brg Housing Spacer 23K94/23C95/23K96

Ref No.	Part No.	Description
24	AM030	Cutter Shaft Pulley
25	W204303	Pulley Ret. Washer
26	NHM20X1.5T	Pulley Ret. Nut
27	WM20S	Pulley Ret. S/P Washer
32	AM07604A	Cutter Disc
33	SH0612C	Cutter Disc Ret. Bolt (4)
34	N06CN	Cutter Disc Ret. Bolt Nut (4)
35	SMB198S	Blade - Stepped
	SMB198A	Blade - Air Flow (opt)
37	SKIT01D1	Blade Bolt & Nut Set
43	V05	Belt - Cutter to Electric Clutch
45	AM220	Cutter Front Guard
46	W051216	Cutter Guard Washer (3)
47	N05CN	Cutter Guard Ret. Nut (3)
48	AM230	Cutter Bushes (2)

SKIT66 Deflector Kit
SKIT54N Blade/Bolt/Nut- Step
SKIT55N Blade/Bolt/Nut- H/Flute

* Used on Model 23K94, Serial No 16E-0634 & Onwards

Please note machines that have been up-graded with SKIT106 Kit, Pulley Alignment must use parts marked '*'

